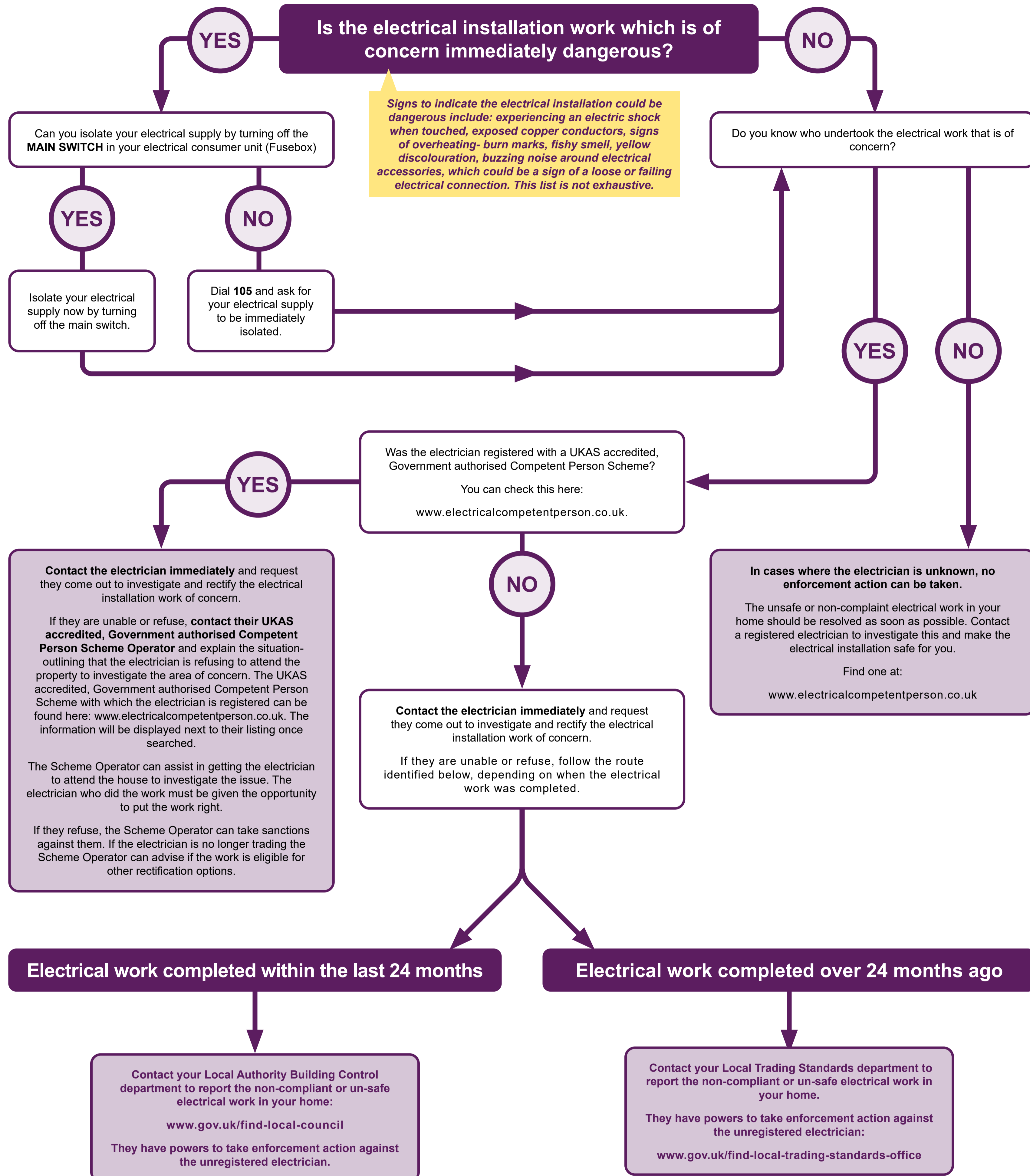


What to do if you find instances of unsafe or non-compliant electrical work in your home.



We encourage you to report any instances of unsafe or non-compliant electrical installation work via this [online form](#).

This will help us improve our understanding of the type and scale of unsafe and non-compliant electrical work in homes throughout the UK.

This data will be used to consider whether legislative changes are needed to enhance electrical safety standards and will NOT be used to undertake any enforcement action.