



TRUSTMARK
Government Endorsed Quality

Pre-Ofgem Notification Validation API
(Ofgem -Lite)

Changelog

Version	Date	Comments
1.0	20 May 20	First issue for comment
1.1	19 June 20	Updated following feedback received with additional detail on data matching and fixed term pricing throughout ECO.
1.2	03 Jul 20	Duration extended to end June 2020 to permit time for processing following feedback, fees adjusted accordingly.

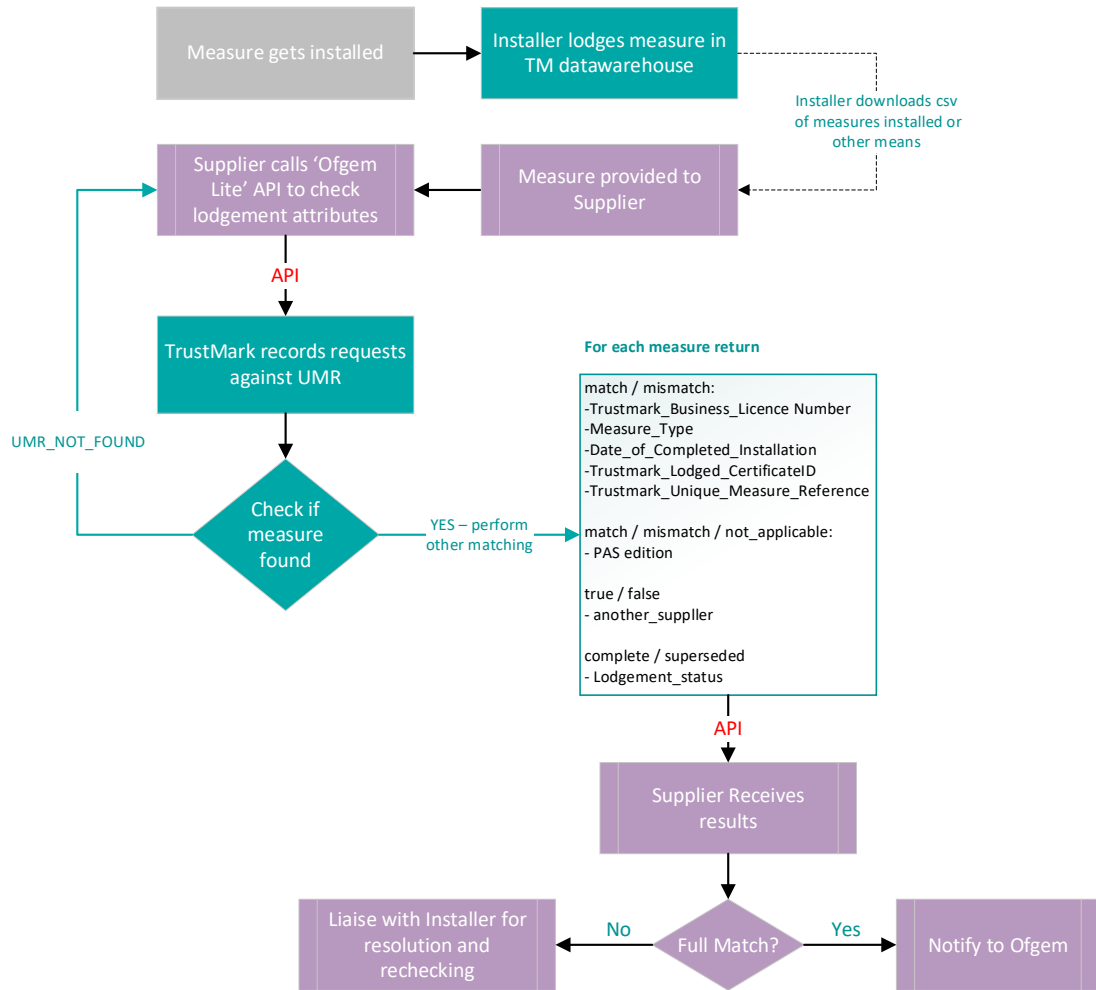
1. Overview

The provision of a new optional API that can be used by Energy Suppliers to assist with the early identification and resolution of data errors before reporting to Ofgem.

This document provides a brief overview of the proposed service.

Features include:

- Validation of lodgement attributes before reporting to Ofgem
- Identification of whether another API user has checked this measure – this will assist where a UMR has been provided to more than one supplier
- Confirmation of a lodgement status in case it has been ‘superseded’ by installer
- Use of a cut down version of the matching engine used by Ofgem to provide consistency



Attributes and results

Attribute	Result	Note
TrustMark_Business_Licence_Number	Match Mismatch	
Date_of_Completed_Installation	Match Mismatch	Matches against date of install or handover if later and where populated
Measure_Type	Match Mismatch	
TrustMark_Lodged_CertificateID	Match Mismatch	
Installed_In_Accordance_with_PAS	Match Mismatch Not_applicable	
Postcode	Match Mismatch	
UMR_Called_by_Another_Supplier	True False	Returns True if this UMR has been checked by different supplier that also uses the API. Contact installer to resolve.
measureStatus	Complete New Superseded UMR_NOT_FOUND	- Valid lodgement - Created but not submitted - Not valid, replaced by another lodgement - UMR does not match
Potential Future Enhancement		
Guarantee_Code	Match Mismatch	Return indication as to whether the Ofgem Guarantee Code Matches. This would be added if implemented for the API used by Ofgem.

A Postman script containing an example will be provided for ease of implementation. A sandbox environment will be used for testing ahead of integration with production.

Mocked Illustration of API calls (may be subject to change)

```
{
  "result": {
    "TrustMark_Business_Licence_Number": "Match",
    "Date_of_Completed_Installation": "Match",
    "Measure_Type": "Match",
    "TrustMark_Lodged_CertificateID": "Match",
    "TrustMark_Unique_Measure_Reference": "Match",
    "Installed_In_Accordance_with_PAS": "Match",
    "Postcode": "Match",
    "UMR_Called_by_Another_Supplier": "False"

    // Potential Future Enhancement
    //"Guarantee Code": "Match"
  },
  "request": {
    "TrustMark_Business_Licence_Number": "1624715",
    "Date_of_Completed_Installation": "2020-05-05T00:00:00",
    "Measure_Type": "CWI_0.027",
    "TrustMark_Lodged_CertificateID": "5365",
    "TrustMark_Unique_Measure_Reference": "6ang484j1N4",
    "Installed_In_Accordance_with_PAS": "PAS 2030:2017",
    "Postcode": "RG21 4EB"

    // Potential Future Enhancement
    //"Guarantee_Code": "CYGCIG02"
    // from Guarantee Code in latest Data Dictionary
  },
  "measureStatus": "Complete"
}
```

2. Pricing

TrustMark is a 'not-for-profit', social enterprise and the pricing has been set accordingly to ensure that costs are covered, and the service can be maintained.

The model has been established to cover the costs of changes to keep in sync with changes made to the Ofgem matching API.

In the event of Energy Supplier requested changes they will be quoted for separately and would be applied to the entire service i.e. TrustMark will not be offering different versions per supplier.

Fees per Energy Supplier

Setup: £975 + VAT

Option 1: Annual charge paid in advance £3000+ VAT

Option 2: Paid in advance until 30/06/2022 £4400+ VAT

Limitations 100k API requests per month
Data Sharing Agreement to be signed before service can be used
Currently this API is available to Energy Suppliers only

3. Status

Will be available from end July 2020.

4. More information

If you would like further information about using this service or would like to discuss future enhancements, please contact: data@trustmark.org.uk